

# Wood County North

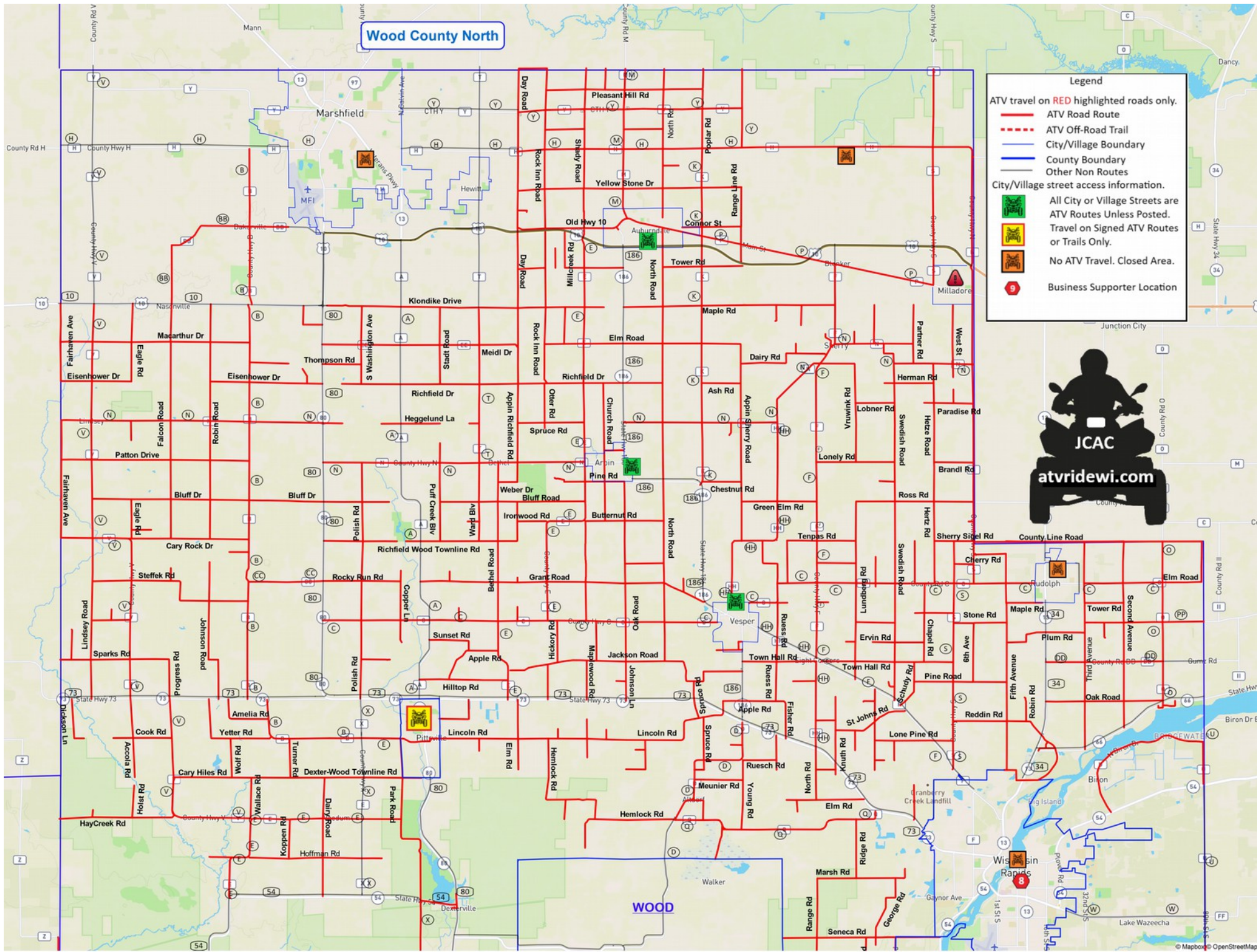
Legend

ATV travel on RED highlighted roads only.

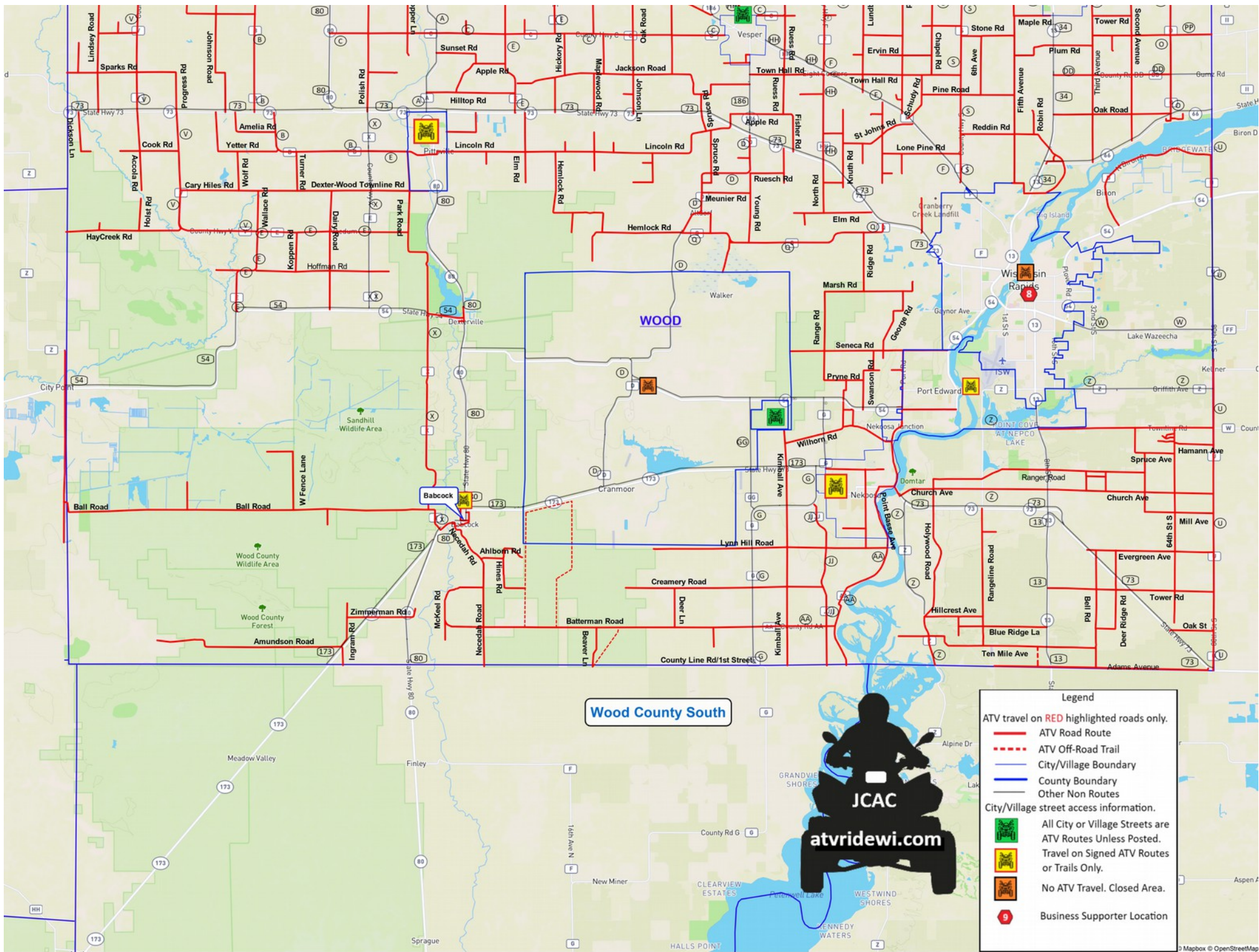
- ATV Road Route
- ATV Off-Road Trail
- City/Village Boundary
- County Boundary
- Other Non Routes

City/Village street access information.

- All City or Village Streets are ATV Routes Unless Posted.
- Travel on Signed ATV Routes or Trails Only.
- No ATV Travel. Closed Area.
- Business Supporter Location







## Wood County

## Business Sponsors

[www.atvridewi.com](http://www.atvridewi.com)

 Rocky Mountain Elk Foundation  
Wisconsin Chapters  
Tomah  
Wisconsin Rapids  
Baraboo  
[www.rmef.org](http://www.rmef.org)

**STITCH WITCHES**  
8 Embroidery and Heat Transfers  
Angela Joosten  
1510 Woodbine St.  
Wis. Rapids, WI  
54495  
(715) 213-6505  
[annie.7030@hotmail.com](mailto:annie.7030@hotmail.com)  
Like us on: 

- Hats
- All apparel
- Uniforms
- Can & Bottle Koozies



Your Ad Here

